

Project Documentation

Diagnostic Rev. 586220 Harness - Keyboard Dongle

Project number: 116

Revision: 0

Date: 28.02.2019

Diagnostic Rev. 586220 Harness - Cassette Port Rev. 0

Module Description

This PCB is a part of the harness for the Diagnostic Rev. 586220 test software for the Commodore C64.

The cassette port PCB connects to the cassette port of the C64 and provides the signal on a 2x3 pin header, which is connected to the central component of the Diagnostic Rev. 586220 harness, the user port PCB.

Pin outs

Cassette Port

J1 – 2 x 6p edge connector (pitch 3.96mm)

Pin	Signal	Pin	Signal
1	GND	A	GND
2	+5V	B	+5V
3	MOTOR	C	MOTOR
4	READ	D	READ
5	WRITE	E	WRITE
6	SENSE	F	SENSE

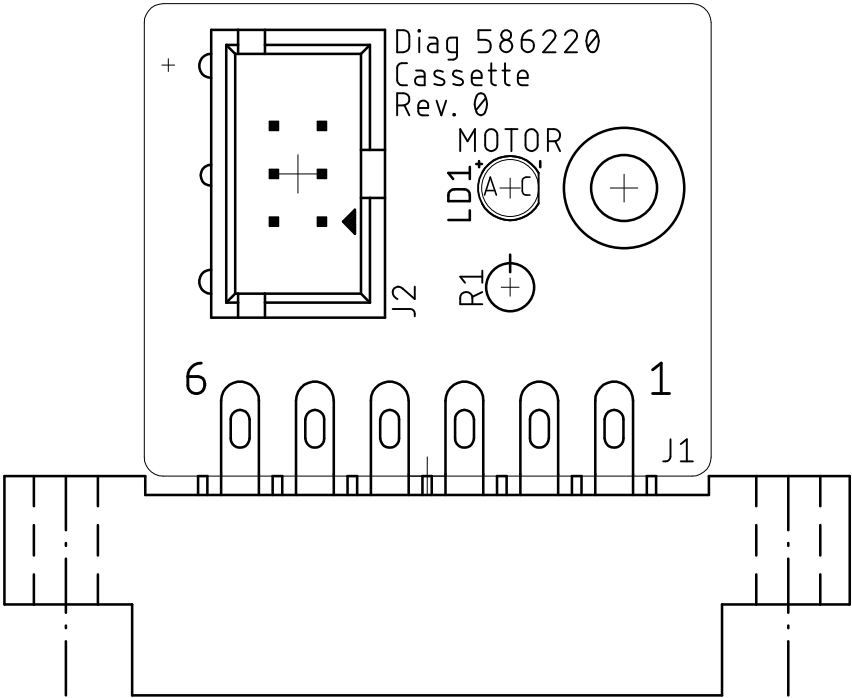
Harness Connector

J2 – 2x3p Pin Header (pitch 2.54mm)

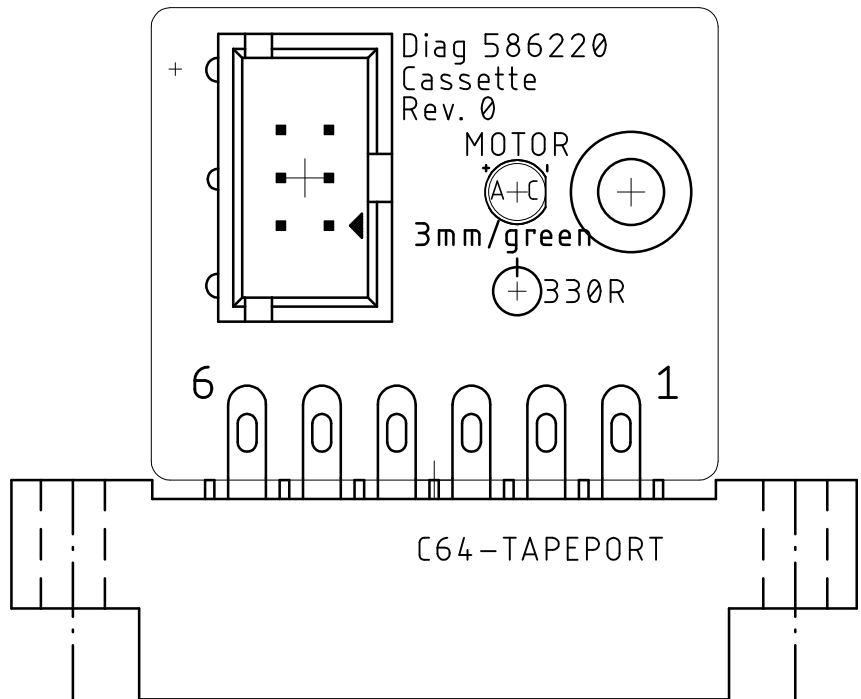
Pin	Signal	Pin	Signal
1	GND	2	+5V
3	MOTOR	4	READ
5	WRITE	6	SENSE

A4

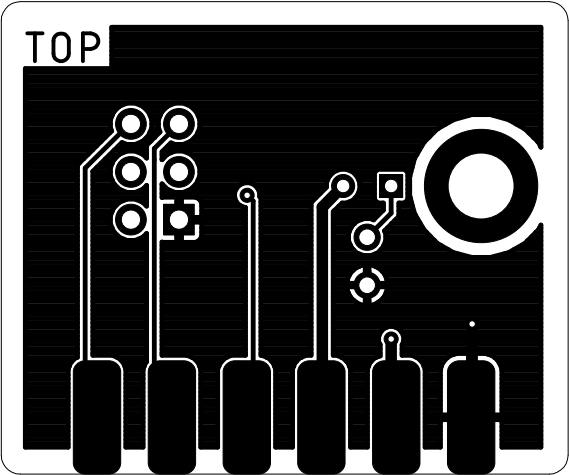
Diag 586220 Harness	Doc.-No.: 114-2-01-00	
	Cu: 35µm	Cu-Layers: 2
Diag_586220_Cassette		
01.03.2019 11:20		Rev.: 0
placement component side		



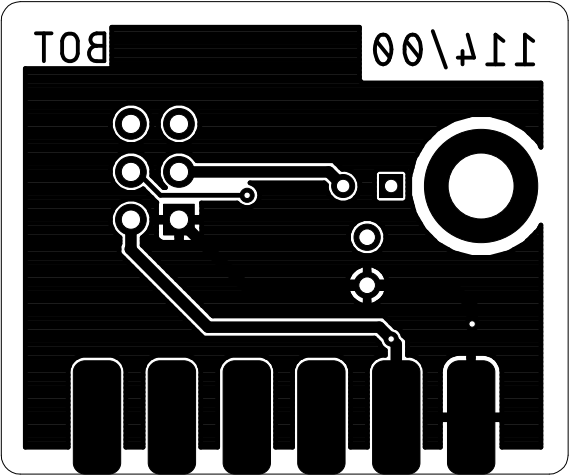
Diag 586220 Harness	Doc.-No.: 114-2-01-00	
	Cu: 35μm	Cu-Layers: 2
Diag_586220_Cassette		
01.03.2019 11:20		Rev.: 0
placement component side		



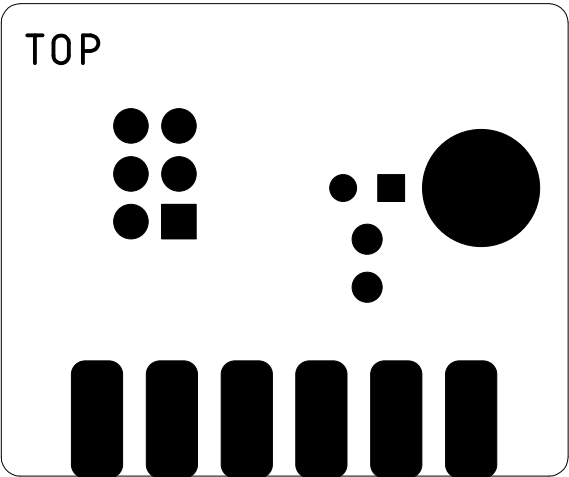
Diag 586220 Harness	Doc.-No.: 114-2-01-00	
	Cu: 35μm	Cu-Layers: 2
Diag_586220_Cassette		
01.03.2019 11:20		Rev.: 0
top		



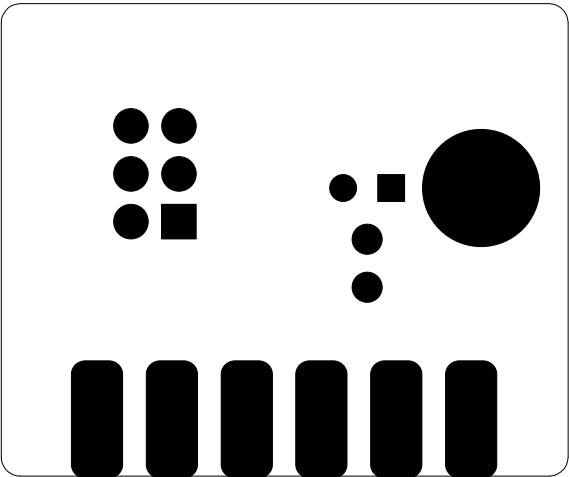
Diag 586220 Harness	Doc.-No.: 114-2-01-00	
	Cu: 35μm	Cu-Layers: 2
Diag_586220_Cassette		
01.03.2019 11:20		Rev.: 0
bottom		



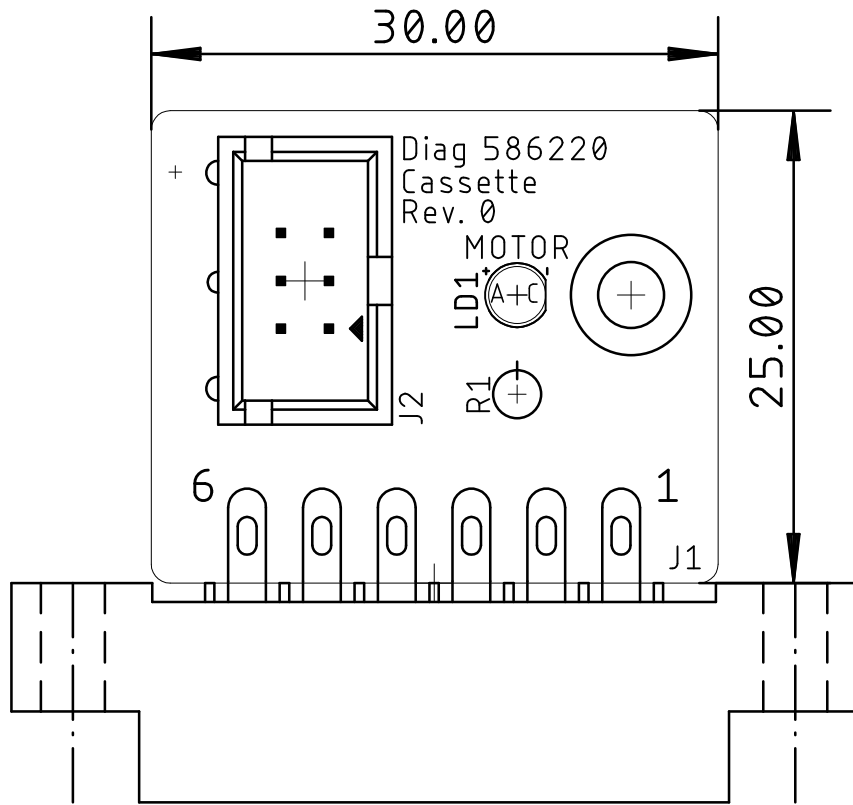
Diag 586220 Harness	Doc.-No.: 114-2-01-00	
	Cu: 35μm	Cu-Layers: 2
Diag_586220_Cassette		
01.03.2019 11:20		Rev.: 0
stopmask component side		



Diag 586220 Harness	Doc.-No.: 114-2-01-00	
	Cu: 35μm	Cu-Layers: 2
Diag_586220_Cassette		
01.03.2019 11:20		Rev.: 0
stopmask solder side		



Diag 586220 Harness	Doc.-No.: 114-2-01-00	
	Cu: 35μm	Cu-Layers: 2
Diag_586220_Cassette		
01.03.2019 11:20		Rev.: 0
placement component side		measures



Diagnostic Rev. 586220 Harness - Cassette Port Rev. 0

Bill of Material Rev. 0.0

Pos.	Qty	Value	Footprint	Ref.-No.	Comment
1	1	114-2-01-00	2 Layer	PCB Rev. 0	2 layer, Cu 35 μ , HASL, 30.0mm x 25.0mm, 1.6mm FR4
2	1	2x6, 3.96mm pitch	C64-TAPEPORT	J1	edge connector, C64 cassette port
3	1	2x3 box connector	2X03WV	J2	e.g. Reichelt WSL 6G
4	1	3mm/green	3MM	LD1	LED, 3mm, green
5	1	330R	RES01	R1	1/4 Watt, 5%